



NVR Mobile Viewer for iPhone/iPad/iPod Touch



Quick Installation Guide
DN-16111 • DN-16112 • DN16113

Table of Contents

Download and Install the App	3
Pre-requisites	3
Check Your iOS Version.....	3
Check Your iOS Version.....	4
Download and Install the App	5
Download the App.....	5
Download the App.....	6
Download the App.....	7
Download the App.....	8
Download the App.....	9
Download and Install the App.....	10
Launch the App.....	10
Add NVRs	11
Enter the app	11
Add a NVR	12
Add an NVR	12
Use Auto-search to add a new NVR	13
Use Auto-search to add a new NVR	14
Search Results Displayed.....	15
Add an NVR	16
Add an NVR	16
Add an NVR	17
Add an NVR	18
Add an NVR	19
Add an NVR	20
Add an NVR	21

Download and Install the App

Pre-requisites

Check your iOS Version



General		About
Photos	550	
Applications	165	
Capacity	29.1 GB	
Available	16.4 GB	
Version	4.3.2 (8H7)	
Carrier	中華電信 10.0	
Model	MC605TA	
Serial Number	84042N37A4T	
Wi-Fi Address	DC:2B:61:78:2D:4E	
Bluetooth	DC:2B:61:78:2D:4D	

To be able to install and run the NVR Mobile Viewer, please make sure your iDevice is running iOS 4.3 or later. To check what version of iOS is currently running on your device, go to "Settings" >> "General" >> "About".

Check your iOS Version



If you are using an iOS version before 4.3, simply launch iTunes on your Mac or PC and plug in your iDevice to upgrade. You should be prompted to download and update your iDevice as soon as iTunes is launched. Simply choose "Download and Update" to continue.

Download and Install the App

Download the App



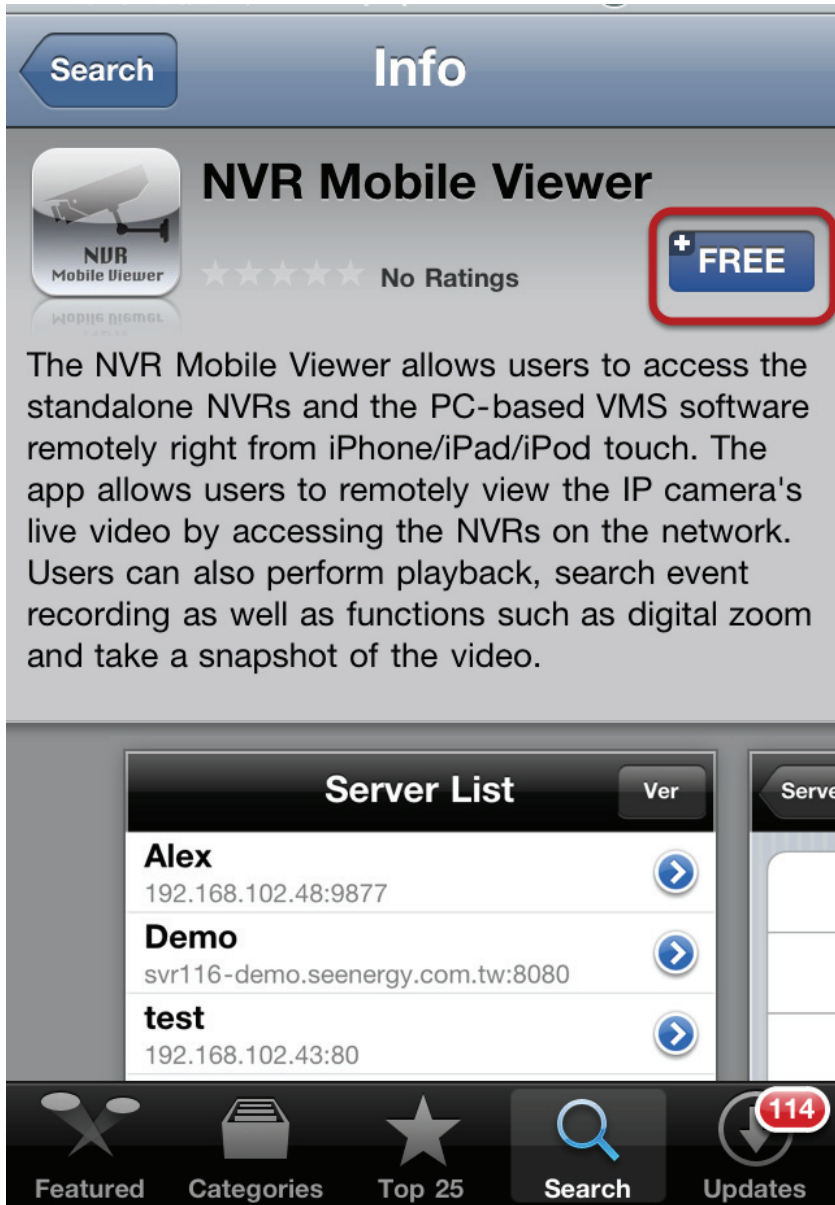
To download the app, launch the "App Store" app on your iDevice. Make sure you have an iTunes account before proceeding the download. If you don't have an account valid iTunes, you can apply one by using the iTunes application.

Download the App



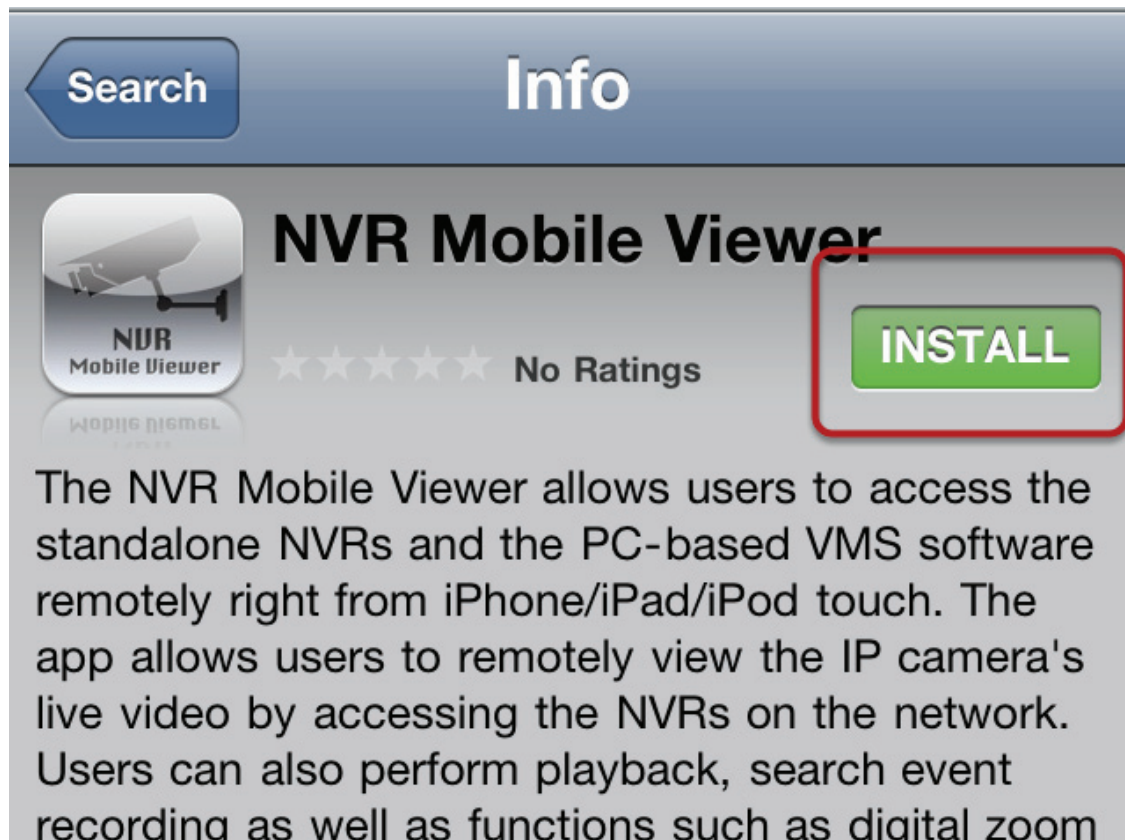
Once you are in the "App Store" app, go to "Search" and type in "NVR Mobile Viewer" to search. It should show up at the top of the list.

Download the App



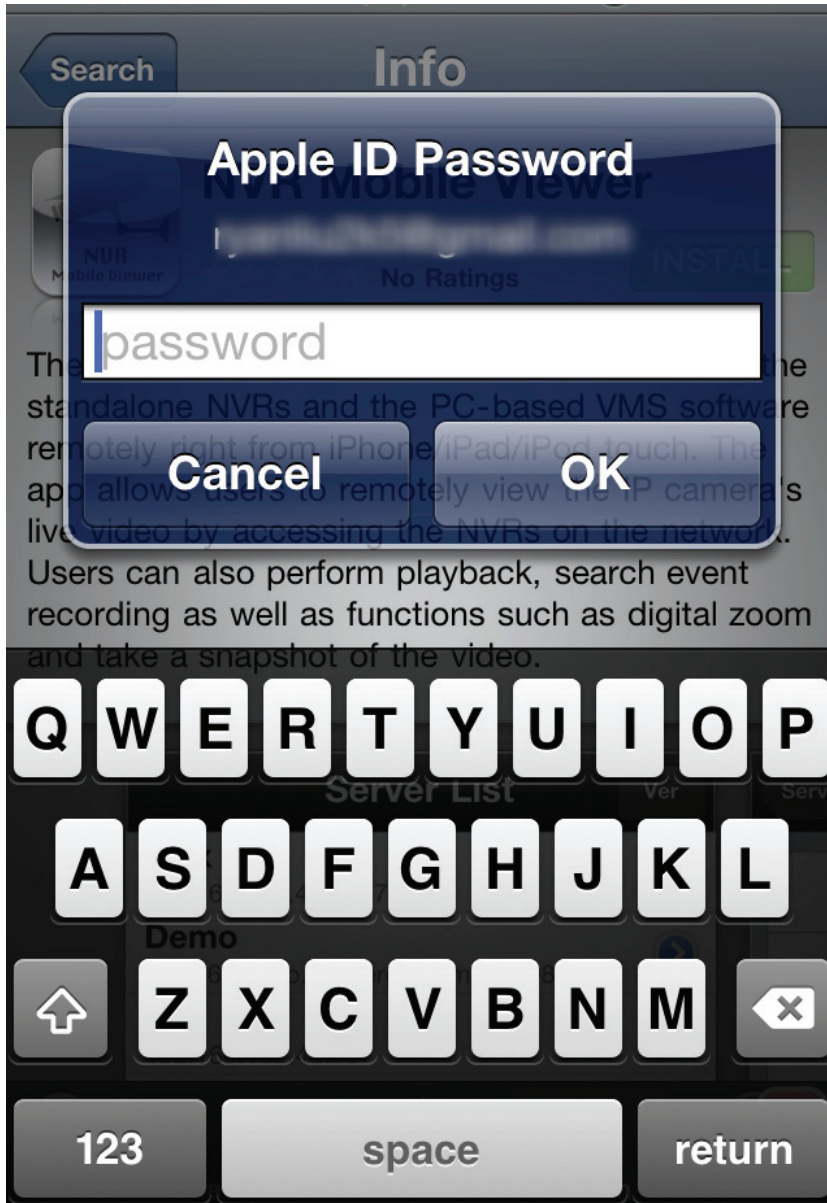
Click on the "FREE" button.

Download the App



The "FREE" button should become "INSTALL", simply tap on it to proceed.

Download the App



You should be prompted enter your Apple ID.

Download and Install the App



The download should then begin.

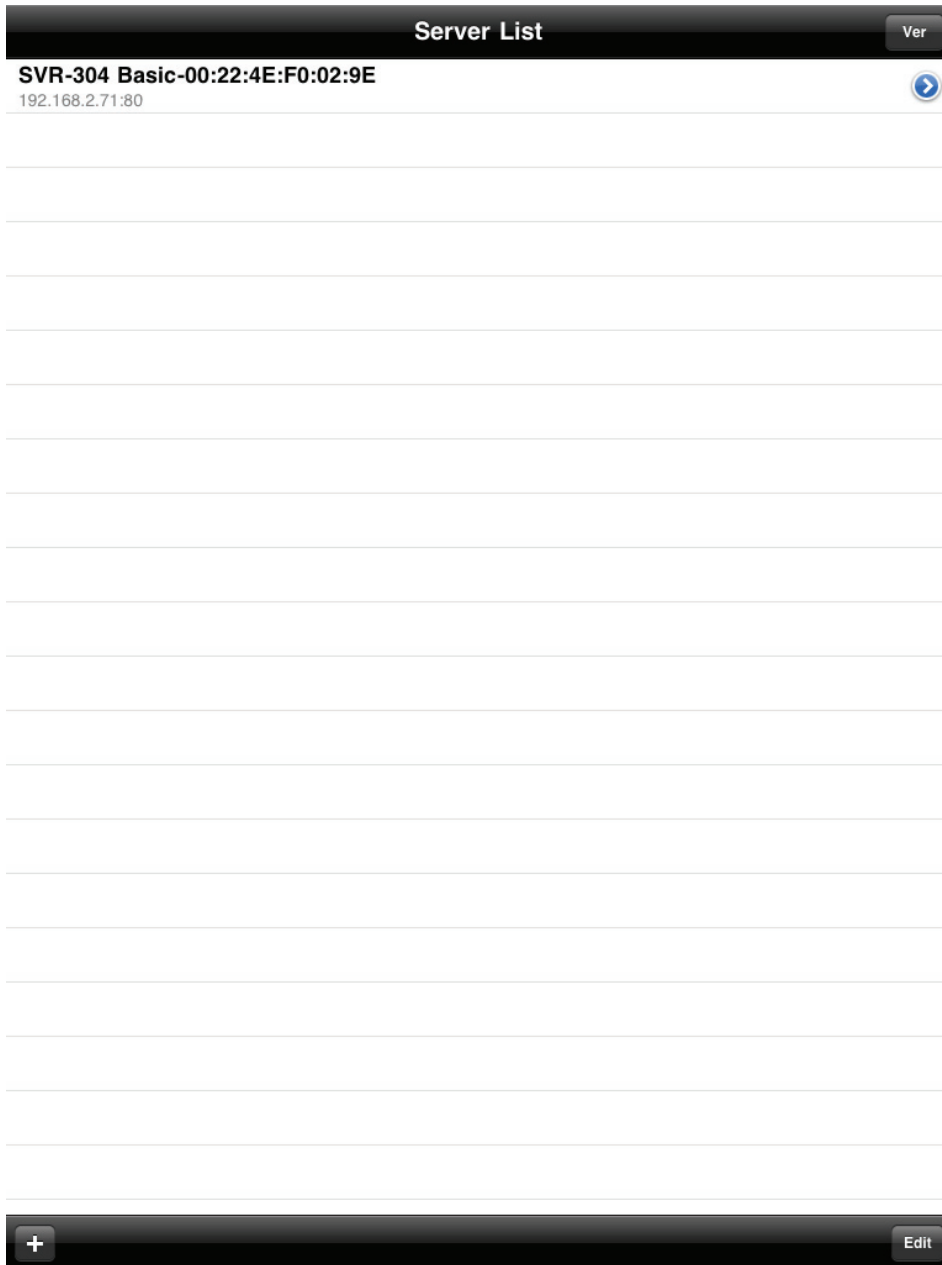
Launch the App



When done, simply tap on it to launch.

Add NVRs

Enter the app



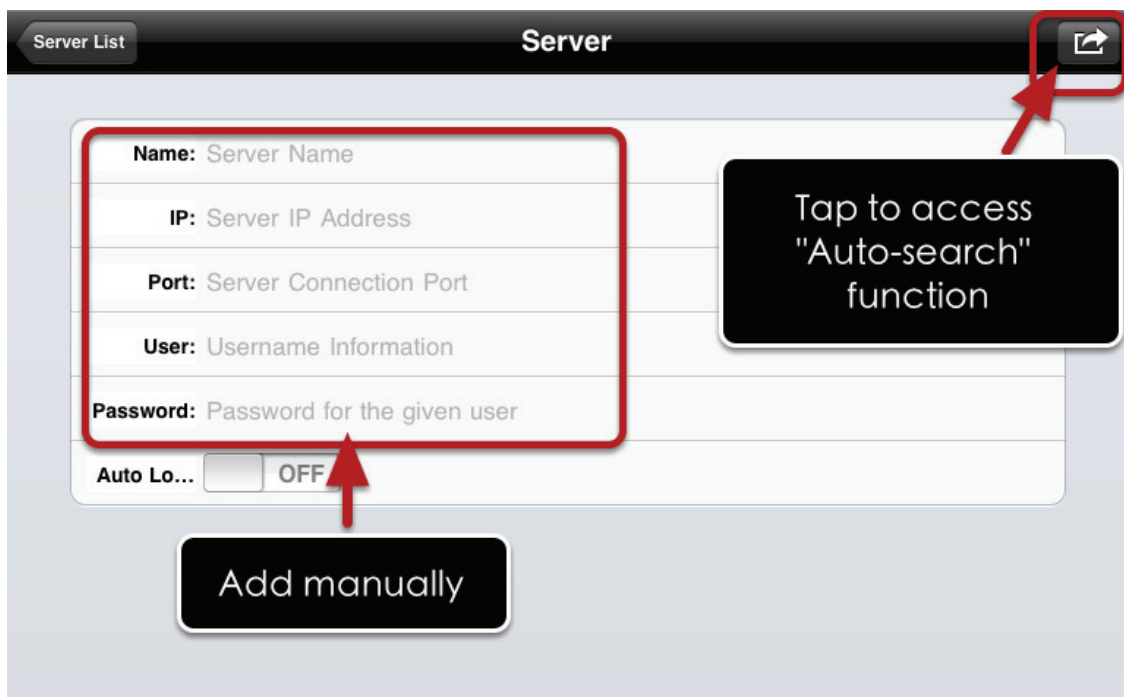
Once you enter the app, you should be presented with the "Server List" page. By default, this page should be empty.

Add a NVR



To add an NVR, click the "+" button in the lower-left hand corner.

Add an NVR



You should then enter the "Server" info page which allows you to manually enter NVR's access information and add it to the app. Or you can use auto search function to help you find available NVRs within the local network. To use the auto search function, tap the button in the upper-right hand corner.

Use Auto-search to add a new NVR

The screenshot displays the 'Server' configuration interface. At the top, there is a 'Server List' button and a 'Server' title. A share icon in the top right corner is circled with a '1'. The main form contains the following fields:

- Name:** Server Name
- IP:** Server IP Address
- Port:** Server Connection Port
- User:** Username Information
- Password:** Password for the given user
- Auto Lo...:** OFF

At the bottom of the screen, there are two buttons: a red 'Save' button and a white 'Search' button. A red box highlights the 'Search' button, and a circled '2' points to it.

Tap on the button in the upper-right hand corner should bring up an additional menu. Tap on the "Search" option to start auto search.

Use Auto-search to add a new NVR



The app will then start searching available NVRs within the local network.
(Please make sure you have configured the iPad/iPhone/iPod Touch in advance to have wireless access to the same local network where the NVRs are installed before performing the auto search function)

Search Results Displayed



The available NVRs will then be listed.

Add an NVR



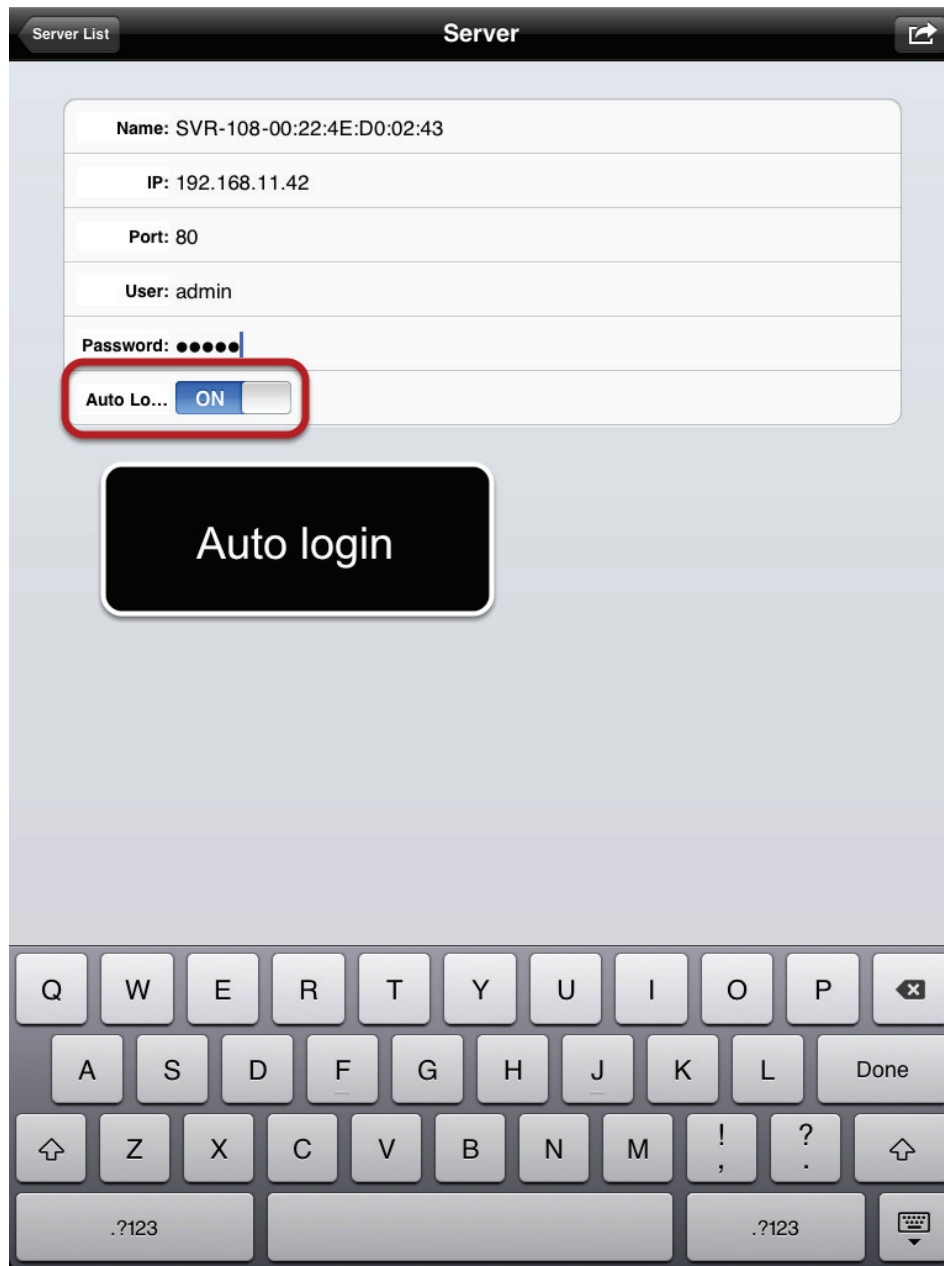
To add one, simply tap on it from the list.

Add an NVR



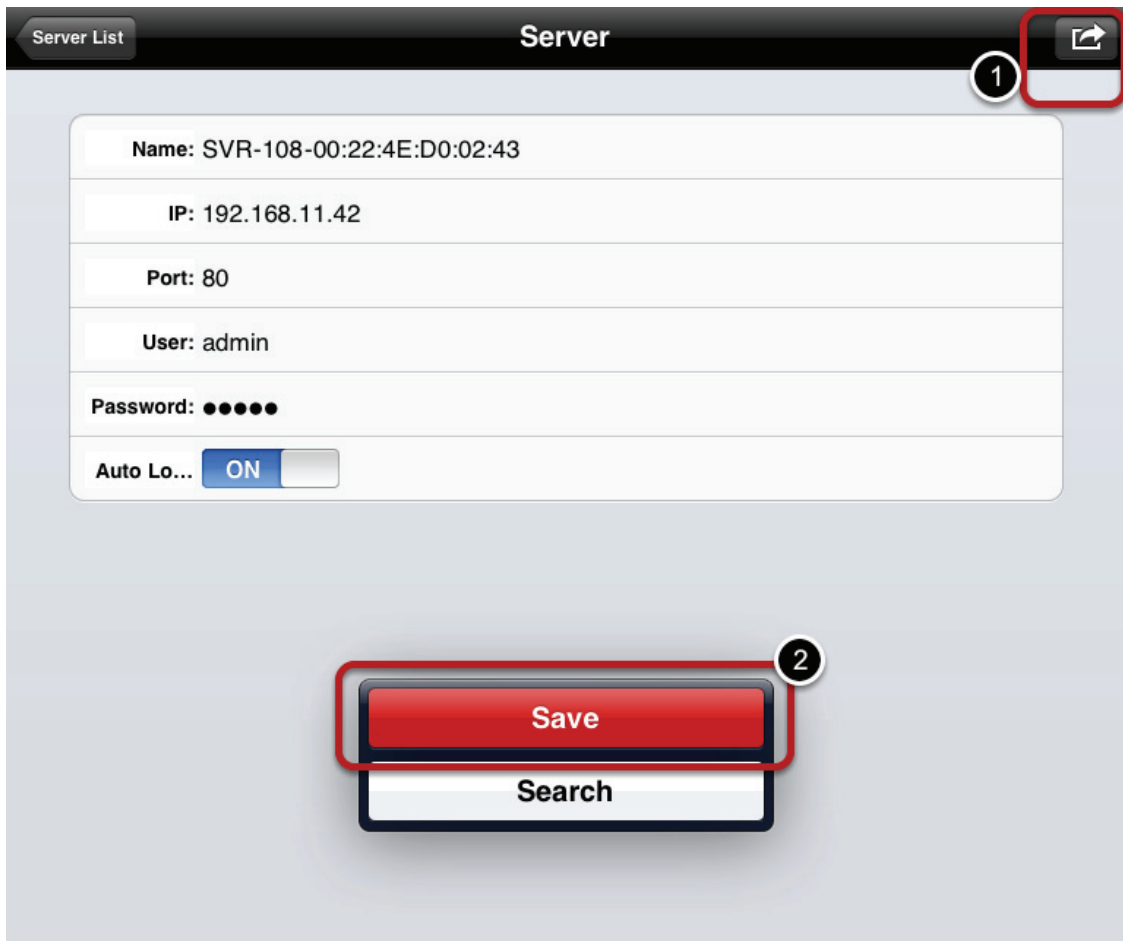
You will then be taken back to the "Server" info page and the "Name", IP", and "Port" fields should already be filled. Simply enter the "user" and "Password" to finish configuration.

Add an NVR



Tapping on the "User" or "Password" field will bring up the virtual keyboard. Make sure you also enable the "Auto Login" function so that you won't be prompted for username and password everytime you try to log in to the NVR.

Add an NVR



Tap the button in the upper-right hand corner again and tap "Save" to save the configuration.

Add an NVR



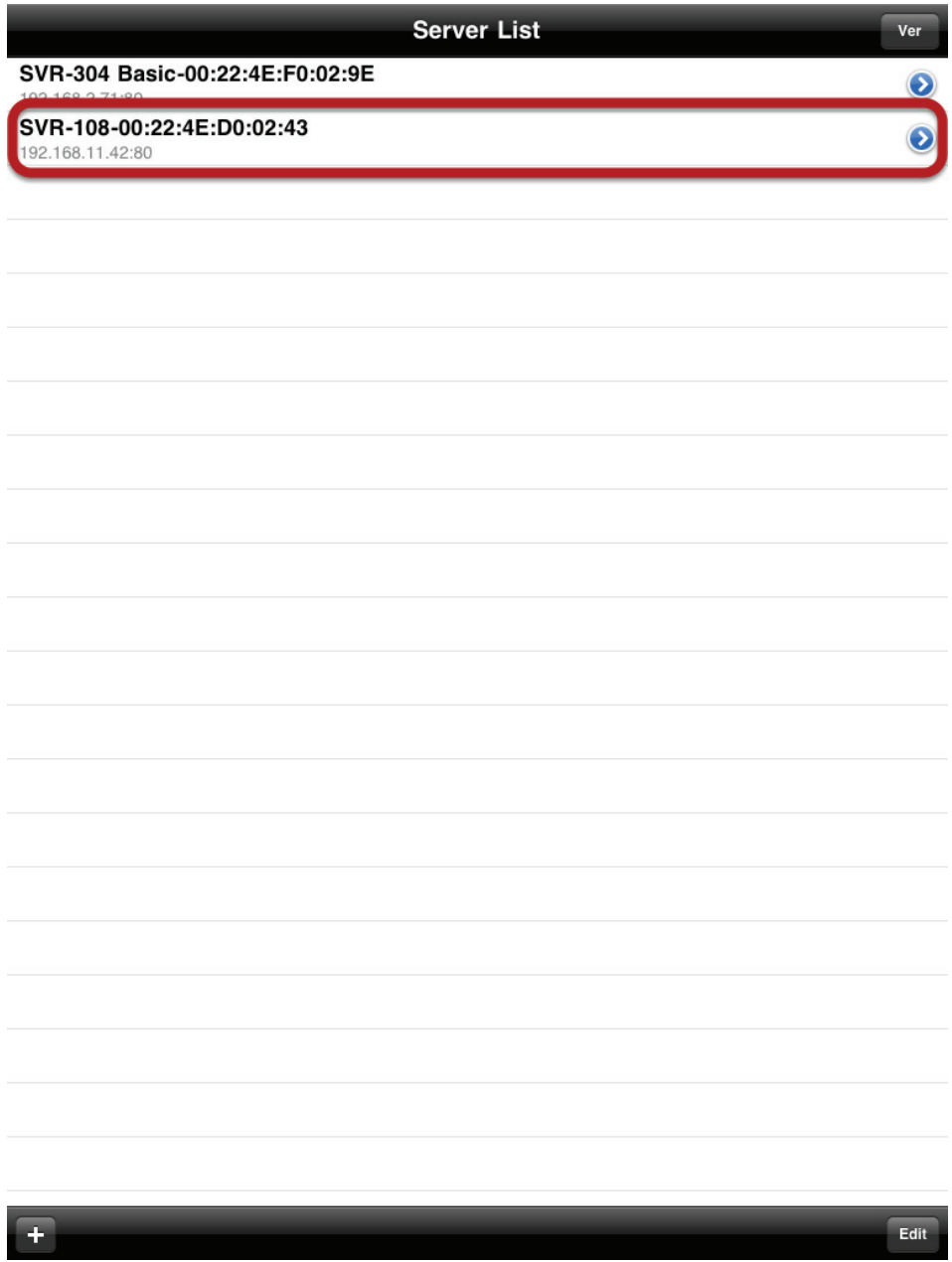
The screenshot shows the 'Server' configuration screen in an iOS application. The screen has a dark header with 'Server List' on the left and 'Server' in the center, and a share icon on the right. Below the header is a form with the following fields:

- Name: SVR-108-00:22:4E:D0:02:43
- IP: 192.168.11.42
- Port: 80
- User: admin
- Password: ●●●●●●
- Auto Lo... ON

Below the form is a large blue button with the text 'Auto Detecting ...' and a white loading spinner icon.

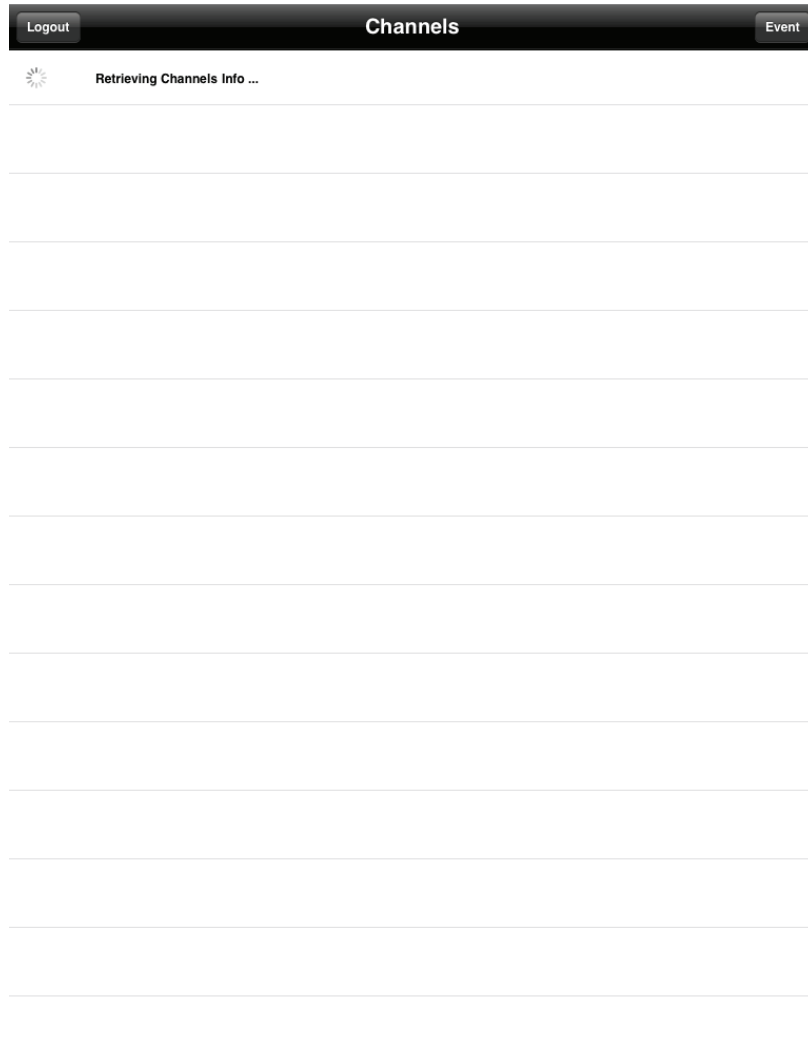
The app will then start validating the information that has been entered.

Add an NVR



Upon successful validation, the NVR will be added and listed in the "Server List" page. Tap on one from the list to access it.

Add an NVR



The app will start retrieving its channel info. (Cameras that are added to this NVR)

Hinweis: Bei falscher Installation und unsachgemäßem Gebrauch im Wohnbereich kann das Gerät Störungen bei Rundfunkgeräten und anderen elektronischen Geräten verursachen. Ein sachgemäßer Gebrauch liegt vor, wenn das Gerät, soweit durchführbar, mit geschirmten Anschlusskabeln betrieben wird (bei Netzwerkprodukten zusätzlich geschirmter Kabel der Kategorie 5e und höher). Das Gerät wurde getestet und liegt innerhalb der Grenzen für Computerzubehör der Klasse A gemäß den Anforderungen nach EN 55022. Warnung: Dieses Produkt entspricht der Prüfklasse A –es kann im Wohnbereich Funkstörungen verursachen; in diesem Fall kann vom Betreiber verlangt werden, angemessene Maßnahmen durchzuführen und dafür aufzukommen. Konformitätserklärung: Das Gerät erfüllt die EMV-Anforderungen nach EN 55022 Klasse A für ITE und EN 55024. Geräte mit externer oder eingebauter Spannungsversorgung erfüllen weiterhin die Anforderungen nach EN 61000-3-2 und EN 61000-3-3. Damit sind die grundlegenden Schutzanforderungen der EMV-Richtlinie 2004/108/EC erfüllt. Die CE-Konformität wurde nachgewiesen. Die entsprechenden Erklärungen sind beim Hersteller hinterlegt.

www.assmann.com | ASSMANN Electronic GmbH | Auf dem Schüffel 3 | 58513 Lüdenscheid | Germany